



**Record Electrical Associates Ltd**



**Record Electrical Proteus Panel Meters.**



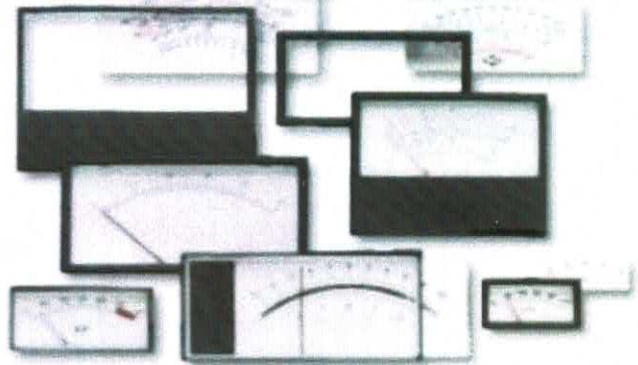
**Record Electrical Associates Ltd**

# PROTEUS RANGE

## Panel Meters

# PROTEUS

- P**roven Pivot & Jewel Movement
- R**obust Construction
- O**ptional Internal Illumination
- T**ailored Sensitivities/Ranges
- E**uropean Din Configuration
- U**nique 'Slide-In' Scale
- S**tyle Options



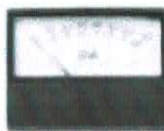
The proteus range comprises four instruments, with three style options, which gives flexibility with regard to panel design. The 'slide-in' scale facility makes scale changes an easy task with no risk of movement damage.

These instruments give the equipment designer choice and style. Constructed with moulded case parts and polycarbonate windows they are robust and durable.

Illumination is possible with push-in bulb holders that are concealed and fixed to the internal mounting frame.

Manufactured for Ac and Dc applications they are also suitable for heavy usage when used in conjunction with current transformers and shunts.

The style options are:



Front panel



Rear panel F



Rear panel XF



**Record Electrical Associates Ltd**

Company Registration No: 4885349

[Privacy Policy](#)

Tel: 0161 864 3583

Email: [info@reauk.com](mailto:info@reauk.com)

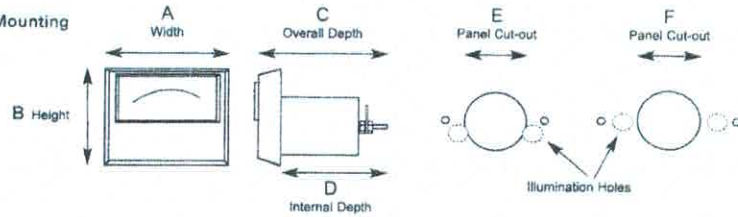
Unit C1 Longford Trading Estate,  
Thomas Street,  
Stretford, Manchester  
M32 0JT



Record Electrical Associates Ltd

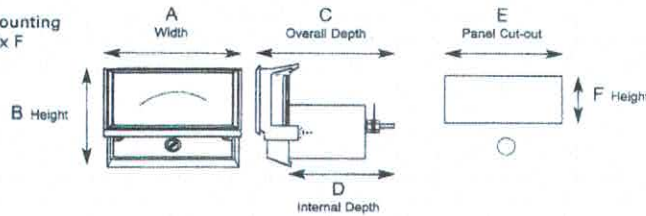
# PROTEUS

## Front Panel Mounting



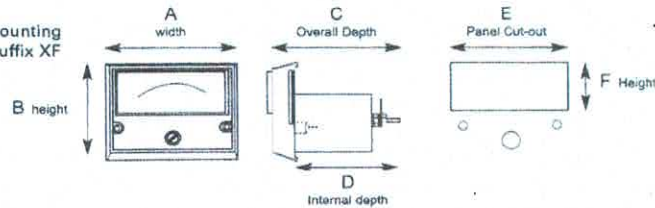
		A	B	C	D	E	F
P48	90°	48.0	45.0	49.0	36.0	26.0	
P72	90°	72.0	55.0	49.0	60.0		26.0
P96	90°	96.0	72.0	49.0	83.0		26.0
P120	90°	119.4	84.2	56.5	105.0		26.0

## Rear Panel Mounting Snap on suffix F



		A	B	C	D	E	F
P48F	90°	48.0	44.0	53.6	47.5	46.0	23.0
P72F	90°	72.0	53.5	53.6	47.5	70.0	33.2
P96F	90°	96.0	71.5	53.6	47.5	93.5	44.5
P120F	90°	120.0	83.0	61.1	55.0	117.5	49.5

## Rear Panel Mounting Screw fixing suffix XF



		A	B	C	D	E	F
P48XF	90°	45.5	42.5	49.0	37.5	41.6	18.3
P72XF	90°	69.5	52.5	49.0	37.5	63.7	26.7
P96XF	90°	93.5	69.5	49.0	37.5	87.0	38.0
P120XF	90°	117.0	81.5	56.5	45.0	110.7	48.7

all sizes in mm

### Movement Details

**Moving Coil** Pivot & jewel movements instruments available in 95° formats.  
Standard operating range Voltmeters 60mV - 1000V  
Ammeters 100uA - 20mA

Ammeters can be used in conjunction with external shunts to achieve higher operating applications.  
Class Accuracy ±1.5%  
Ambient Temperature Range +10°C to +30°C

*Illumination (optional) if required, please specify normal operating conditions. For further information on this range of instruments or if you wish to discuss specific requirements please contact the sales office.*



Record Electrical Associates Ltd

Company Registration No: 4885349

Privacy Policy

Tel: 0161 864 3583

Email: [info@reauk.com](mailto:info@reauk.com)

Unit C1 Longford Trading Estate,  
Thomas Street,  
Stretford, Manchester  
M32 0JT