

RECORD Cirscale

MOVING COIL INDICATORS



- Seven standard sizes.
- Accuracy to $\pm 1\%$ (class 1).
- Long scale 240° Presentation.
- Dial markings to customer's requirements
- Strong construction.
- Certified for use within hazardous areas
- Robust "PREMIER" pivot & jewel moving coil movement



This family of circular panel meters/moving coil indicators has been designed for use in the most demanding of industrial applications.

Available in case sizes ranging from 50 mm to 300 mm diameter they are supplied with suitable fastenings for quick and easy assembly into panels.

The **Cirscale** range utilises the 240° "Premier" movement. This proven movement system has been manufactured using the very best precision components and automated production facility. These factors give the movement system its inherent reliability, linearity and accuracy among moving coil indicators.

Dials are marked to customers requirements and can include coloured indices/lines/bands, dual /multi scales and customer's name/logo, etc.

Instruments are available for A.C. or D.C. applications. For large A.C. or D.C. current

and voltage applications we could supply complete with external current/voltage transformers, shunts, or suitable transducers.

OPTIONAL FEATURES

Illuminated Scales: The Cirscale range offers two types of illumination.

Internal Illumination: Long life filament lamps within the case illuminate the translucent dial. Illumination power either 12 V d.c. or 24 V d.c. as standard.

External Illumination: Slots in the case allow light to be shone into the acrylic dial,

illuminating the scale and pointer.

Rear Zero Adjustment: Available when front zero adjustment is not required, or if a plain glass front is required.

Intrinsically Safe: Certified by **SIRA** for use in ATEX category 3,2 & 1 respectively, gas group IIC. The technique of intrinsic safety is the highest integrity method of protection available.

Manufactured to BS 89 under the control of ISO 9001 Quality System.

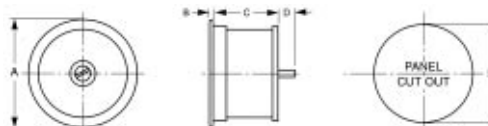
Electrical Specifications

Type	D.C. Current		Full Scale Range For self-contained Instruments				A.C. Current		A.C. Volts		Intrinsic Safe EEx ia IIC T4, T5, T6	
	min	max	D.C. Volts		A.C. Current		min	max	min	max	mA 4/20	mA 0/10
2 PA	0.2mA	500mA	50mV	400V	-	-	-	-	-	-	-	-
2.75 PA	0.2mA	500mA	50mV	400V	-	-	-	-	-	-	-	-
3.25 PA	0.2mA	20A	50mV	400V	1mA	50mA	5V	600V	-	-	-	-
4 PA	0.2mA	20A	50mV	600V	1mA	20A	5V	600V	Yes	Yes	Yes	Yes
6 PA	0.2mA	20A	50mV	600V	1mA	20A	5V	600V	Yes	Yes	Yes	Yes
8 PA	1mA	20A	50mV	600V	1mA	20A	5V	600V	-	-	-	-
12 PA	1mA	20A	50mV	600V	1mA	20A	5V	600V	-	-	-	-

Accuracy to BS 89 D.C. Ranges $\pm 1.0\%$ (Class 1) mV & A.C. Ranges $\pm 1.5\%$ (Class 1.5)
 For D.C. current ranges above those stated an external shunt should be supplied.
 For A.C. current ranges above those stated a current transformer could be supplied.
 Sealed to IP54 with front zero adj.

Intrinsically safe Ambient
 Temp. Range: -20 deg. C to +40 deg. C
 Sealed to IP66 without front zero adj.
 Hazardous Area Indicators Only
 Cert No. SIRA03ATEX2272X

Mechanical Specifications & Dimensions



Type	Dimensions (units)							Options		
	A max (mm)	B max (mm)	C max (mm)	D max (mm)	E min (mm)	Scale Length (mm)	Weight (Approx) (Kgs)	Rear Zero	Dial Illumination Internal	External
2 PA	54	8	46	25	51	90	0.1	-	-	-
2.75 PA	70	7	39	16	67	100	0.2	-	-	-
3.25 PA	95	2.5	55	18	89	138	0.4	Yes	-	Yes
4 PA	120	2.5	71	51	114.5	173	0.6	Yes	Yes	Yes
6 PA	172	2.5	88	51	165	260	1.4	Yes	Yes	Yes
8 PA	217.5	3.5	94	10	203	375	2.5	Yes	Yes	-
12 PA	350	3.5	90	10	330	460	4.3	Yes	Yes	-

Typical Scale Format

Style 1

(bold presentation for rapid reading)



Style 2

(this style supplied unless otherwise specified)

